

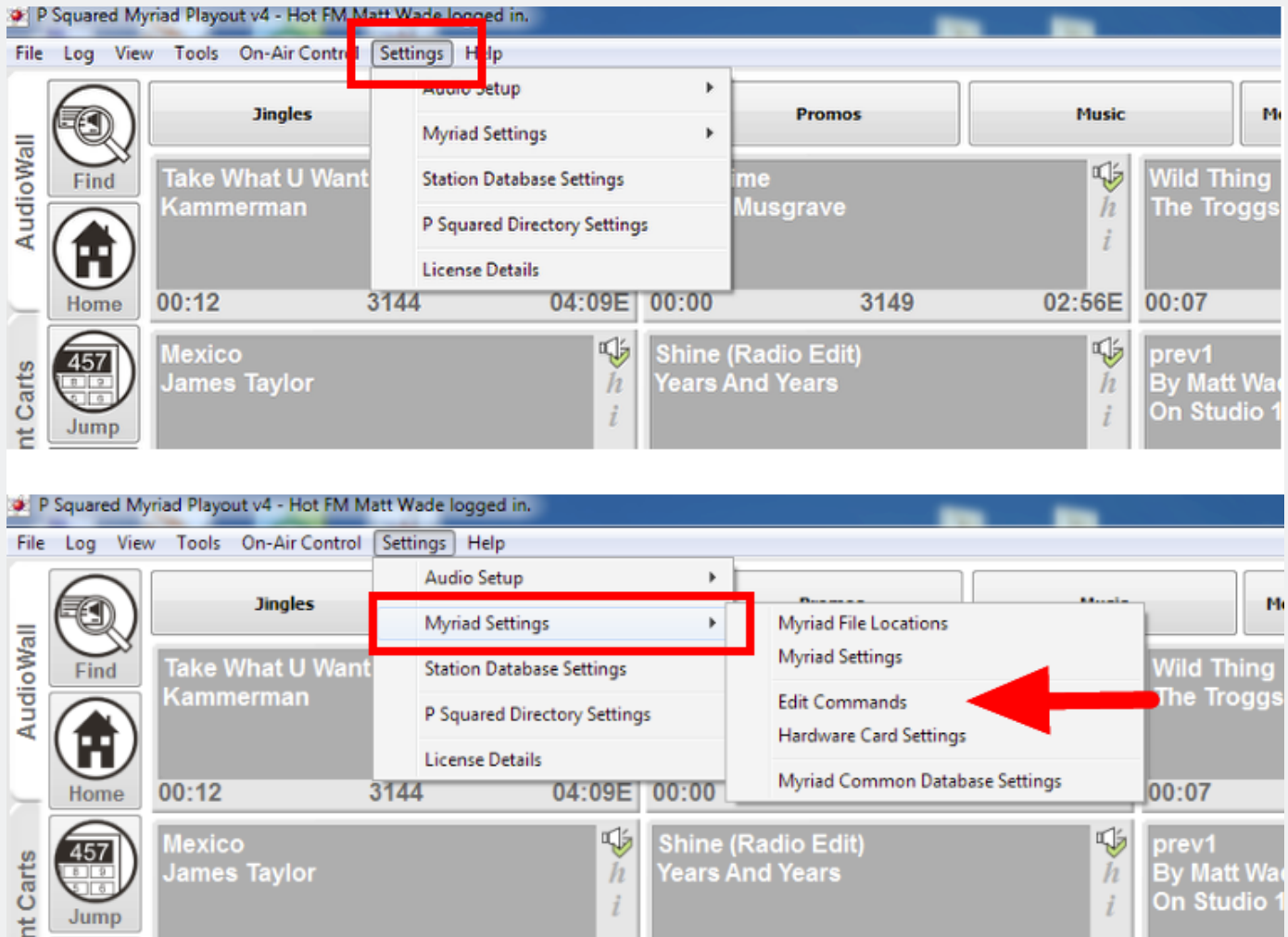
Putting Players into Preview/Clear Mode

I like the ability whilst in the log to pre-listen to the next song to help me correct any levels and hear how perhaps an unfamiliar song begins or ends. Although there is an ability to 'preview' a song from the log it puts it into a set player not necessarily the player that the song will actually play from. This is how I used Myriad Playout Commands to be able to put a player into 'Preview' mode enabling me to listen to it and sort the levels out then clear the preview and play it on air as normal.

Step 1 - Set up Commands

Go to Settings - Myriad Settings - Edit Commands

Putting Players into Preview/Clear Mode



Step 2 - Create Commands

Click on the Green + Icon (highlighted in red) which will bring up the 'Command Details' window below. For the Command Name I would suggest you start it will an exclamation mark so that the command is running 'silently' i.e. there is no interface seen when it is run. In the example below I am creating a command to clear Player 1 to get it to work normally. This needs to be used after you have put a player in 'Preview' mode. Title

Putting Players into Preview/Clear Mode

your command and ensure the type is 'Macro'. Then in the main box enter the following:-

To put Player in Preview (the numerical is the cart player number)

```
PLAYER PREVIEWMODE 1,FORCE
```

```
PLAYER PREVIEWMODE 2,FORCE
```

```
PLAYER PREVIEWMODE 3,FORCE
```

```
PLAYER PREVIEWMODE 4,FORCE
```

To put Player back to normal

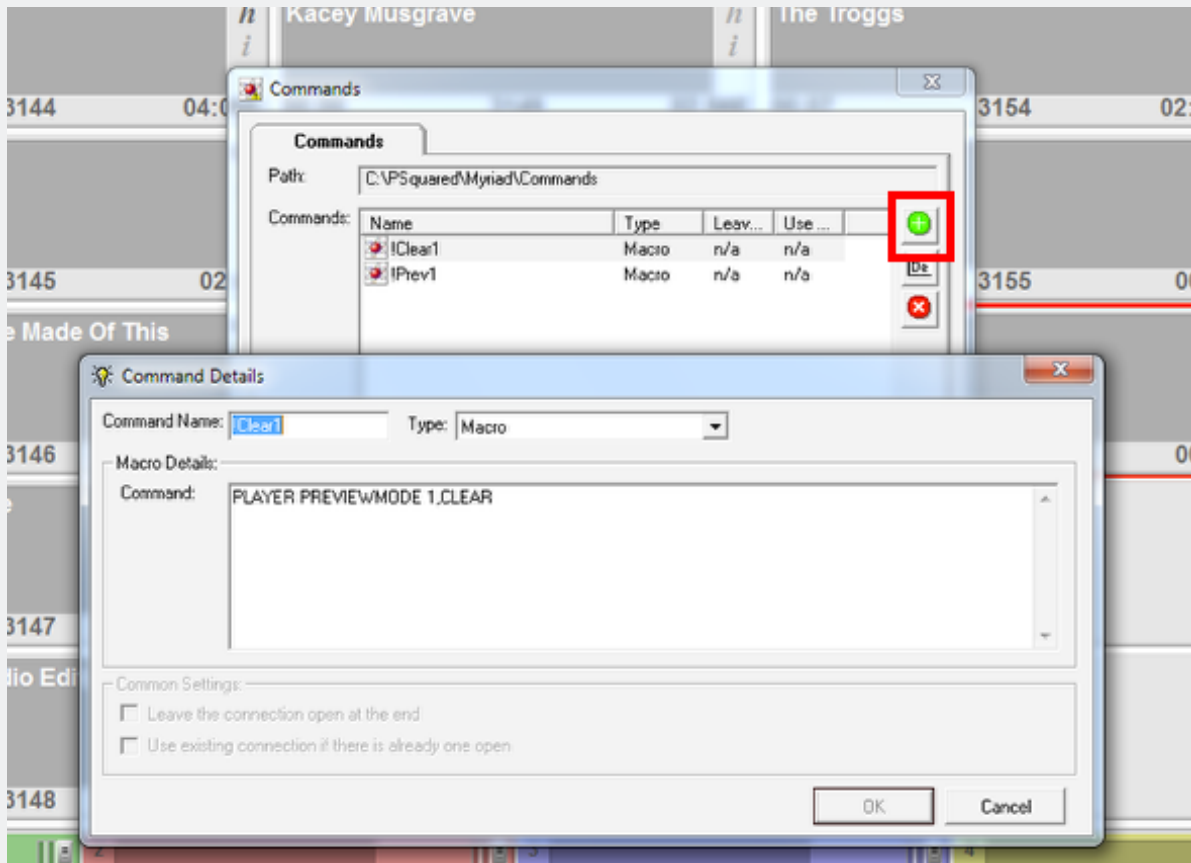
```
PLAYER PREVIEWMODE 1,CLEAR
```

```
PLAYER PREVIEWMODE 2,CLEAR
```

```
PLAYER PREVIEWMODE 3,CLEAR
```

```
PLAYER PREVIEWMODE 4,CLEAR
```

Putting Players into Preview/Clear Mode



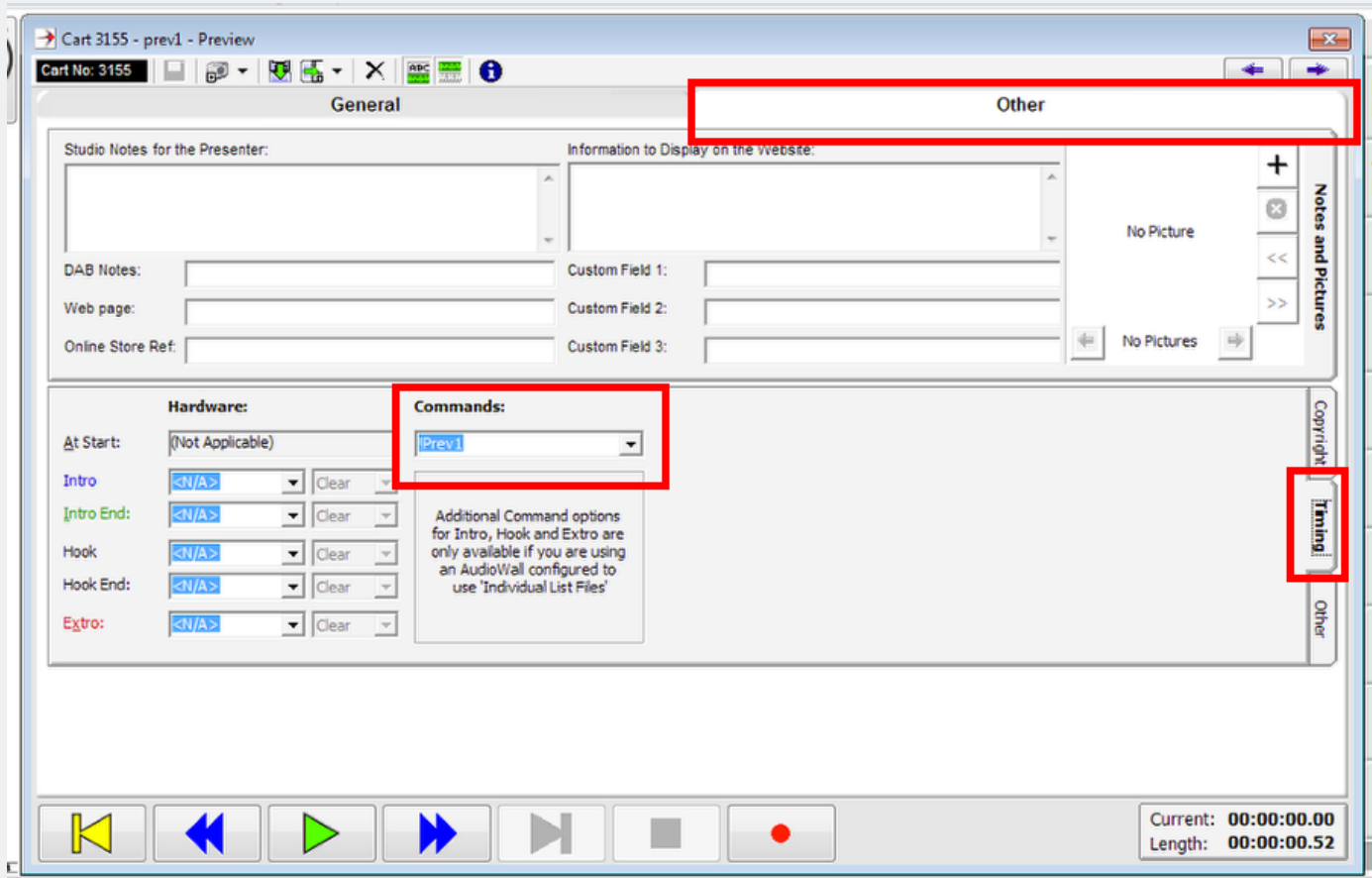
Step 3 - Assign Command to Cart

Now you have created your commands you need to assign them to a cart on the Audio Wall. This cart needs to have a minimum of 0.5 seconds of audio in it (which of course should be silent!). Select the cart and title it as appropriate in SmoothEdit, then click to the 'Other Tab'. You need to select the 'Timing' tab on the bottom right hand side of the window.

You will see a 'Commands' drop down and from here you can select your newly created Commands. Then click on 'OK'.

Putting Players into Preview/Clear Mode

Once all the carts have been created I put them into an Instant Carts list to enable me to quickly fire them off. The only problem I have found is if you have set your Instant Carts to play from Player 4 and you are wanting to put Player 4 into Preview Mode then you need to play the command cart from a different player to get it to work.



More Info

If you require help or training with your P Squared setup at your Radio station please get in touch on email via psquared@mattwadeonline.co.uk.